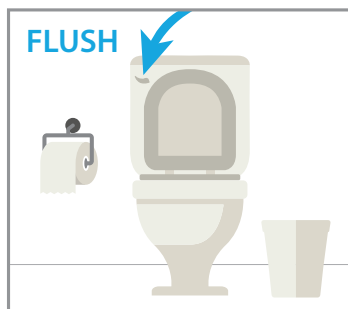
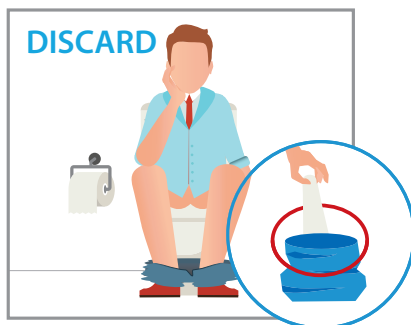


# Read all instructions before beginning your test.



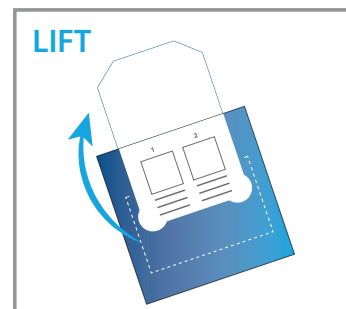
## STEP 1

- Take these instructions, Brush Kit and Test Card into the bathroom.
- Flush the toilet **BEFORE** your bowel movement.



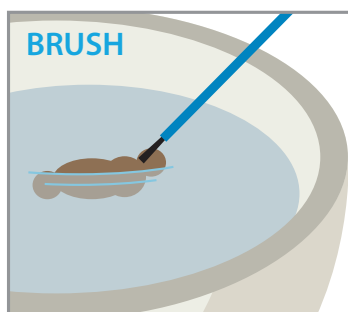
## STEP 2

- After your bowel movement, **DO NOT PLACE USED TOILET PAPER IN THE TOILET BOWL**. Instead, use one of the blue waste bags provided.
- **DO NOT FLUSH** the toilet after your bowel movement.



## STEP 3

- Lift the flap marked "LIFT HERE FOR SAMPLE" on the Test Card to uncover the small white squares marked "1" and "2."



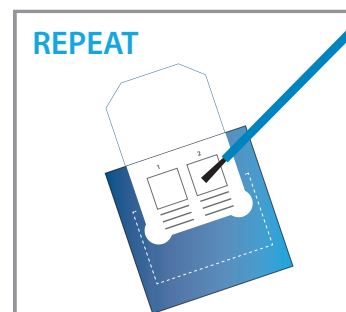
## STEP 4

- **Using one of the blue brushes, gently brush the surface of the stool for about 5 seconds.**
- If the stool is loose, simply stir the water around the stool.
- Remove the brush from the water and gently shake it once to remove excess water and any clumps of stool.



## STEP 5

- Transfer a sample of the **WATER ONLY** by gently dabbing the bristles of the brush onto the small white square labeled "1" on the Test Card for about 5 seconds (some staining of the square may occur).
- Discard used brush in one of the blue waste bags and throw away.



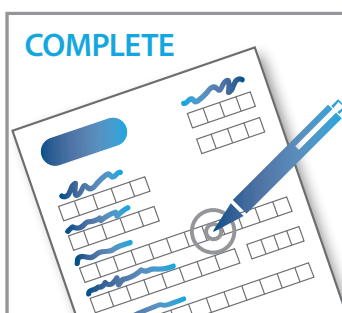
## STEP 6

- Using the second blue brush, repeat step 4 and transfer a second **WATER** sample to the test card by gently dabbing the bristles of the brush onto the small white square labeled "2" for about 5 seconds.
- Discard used brush in the other blue waste bag and throw away in your trash.



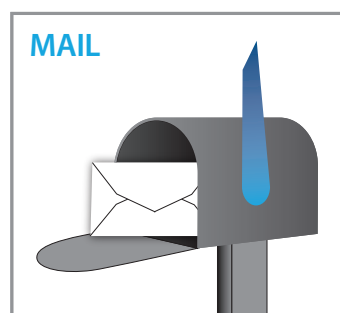
## STEP 7

- **Print your name, date of birth, and the date the sample was collected** on the removable label.
- **REMEMBER TO INCLUDE DATE OF SAMPLE COLLECTION.**
- Peel off the label and use it to reseal the flap.



## STEP 8

- Complete the Reply Form.
- Place the Test Card and Reply Form in the postage-paid mailing envelope provided.
- If your medical professional or the laboratory provided you with a pre-printed test requisition form include the form also in the return envelope.



## STEP 9

- Return to the indicated laboratory or medical professional office either by mail or personal delivery.
- Test Card must be returned to the indicated laboratory or medical professional as soon as possible and within 14 days of sample collection.
- The results will be provided by your medical professional.